

S U M M E R 2 0 0 9

---



---

A Stamford Downtown Outdoor Sculpture Exhibit



**Dear Friends and Neighbors:**

In 1994, Stamford Downtown presented a sculpture exhibit dedicated to recognizing art as a catalyst for public education, enjoyment and enrichment. This outdoor art program, Art in Public Places, is currently in its 16th year and has become one of the City's premier cultural events taking place throughout the Downtown and at the Stamford Town Center. Since its inception, Art in Public Places has grown in size and prominence, providing major works of outdoor sculpture for all to enjoy.

This year's exhibit **Roam Around**, presented by the Stamford Downtown Special Services District, features 42 sculptures on loan to the City. It demonstrates the extraordinary commitment to art that is part of the Stamford culture. Thanks to the talent of 18 sculptors offering their outstanding works of art and the generosity of patrons of the arts such as Seaboard Properties, Snyder Group, Stamford Town Center and W&M Properties, and numerous other companies, this annual public art exhibit will delight Stamfordites and visitors throughout the summer.

This is a summer event you won't want to miss. Take some time out to enjoy the City and see the sculptures in Stamford Downtown. The exhibit will be on display from June through the end of August. It's a great way to spend a day with family and friends in the Downtown, and see what Stamford has to offer.

Sincerely,



Dannel P. Malloy  
Mayor, City of Stamford

**Dear Friends:**

It is with great pleasure that we present the sixteenth annual sculpture exhibit, **Roam Around**. The exhibit includes a collection of 42 sculptures on loan to the City of Stamford from 18 artists whose works will be on display throughout the downtown and at the Stamford Town Center.

This commemorative catalogue is a tribute to an extraordinary collaborative process which makes this special event possible. Our sincere appreciation goes to Mayor Dannel Malloy and the city of Stamford's Operational Team whose support of Downtown events truly makes Stamford "The City That Works." Our many generous Participating Sponsors are directly responsible for ensuring that our public art program flourishes. They include: The Advocate, A. Vitti Construction, Inc., Agora Spa, AT&T, Betsy Levinson & Family, Bildner Capital Corp., Cox Radio, Emmett & Glander, Attorneys at Law, GB Parking, Gibraltar Management Co., Inc., Grade A ShopRite, Happyhaha Studio, Hoffman Investment Partners/ Summer High, LLC, National Realty & Development Corp., People's United Bank, Purdue Pharma L.P., RBS, Reckson, a Division of SL Green Realty Corp., Robinson & Cole, LLP, S.A.C. Capital Advisors, L.P., Seaboard Properties, Inc., Silver Golub & Teitell LLP, Snyder Group, Inc., Stamford Hospital, Stamford Marriott Hotel & Spa, Stamford Town Center, UBS, United Realty of Connecticut, Inc., Urstadt Biddle Properties Inc. and W & M Properties.

Heartfelt thanks to Eileen Heckerling whose tireless research, energy and ideas were instrumental in making this exhibit a reality and of course our gratitude to the team of artists who loaned their sculptures for this incomparable exhibit.

Come Downtown and enjoy this excellent show.



Sandy Goldstein  
President, DSSD

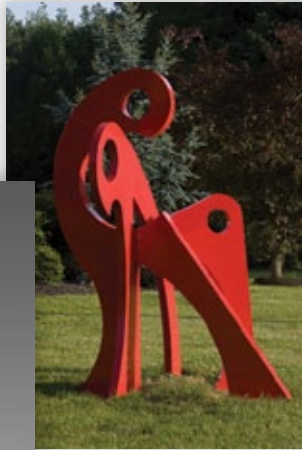


Stephen J. Hoffman  
Chairman, DSSD

**GILBERT BORO**

**Tres Gatos ▶**

Sponsored by:  
W & M Properties



**Raging Bull ▶**

Sponsored by:  
Purdue Pharma L.P.



**PETER BUSBY**

**◀ Grazing Horse**

Sponsored by: RBS

**DENIS CURTISS**

**Aberdare ▶**

Sponsored by: UBS



**Amboseli ▶**

Sponsored by:  
Robinson & Cole, LLP



**DENIS CURTISS**

**◀ Andes**

Sponsored by: Stamford Downtown  
Special Services District



**Deepavali ▶**

Sponsored by:  
Gibraltar Management Co., Inc.



**◀ Elsa**

Sponsored by: Stamford Downtown  
Special Services District



**Bandarawela ▶**

Sponsored by:  
Emmett & Glander,  
Attorneys at Law



**Galle ▶**

Sponsored by:  
W & M Properties



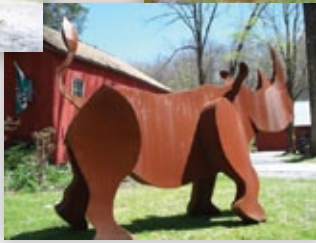
## DENIS CURTISS

### ◀ Oberoi

Sponsored by: Hoffman Investment Partners/  
Summer High, LLC

### ▼ Lotus

Sponsored by: National Realty &  
Development Corp.



### ▲ Idaho

Sponsored by:  
Stamford Downtown  
Special Services District

### ▲ Samburu

Sponsored by: Reckson, a Division of SL Green Realty Corp.



## JOE DEMARCO

### ◀ Focus

Sponsored by: Stamford Town Center

### ◀ Shawn

Sponsored by:  
Saint John the Evangelist  
Roman Catholic Church

### ▼ Out to Pasture

Sponsored by:  
Stamford Marriott Hotel & Spa



### ▼ Hombre

Sponsored by:  
People's United Bank



### ▼ Morris

Sponsored by: Silver Golub & Teitell LLP



## DARRELL DAVIS

### Heron and the Sun ▶

Sponsored by: Stamford Town Center

### Change of Direction ▶

Sponsored by:  
City of Stamford



# Sculpture Exhibit Map

WWW.STAMFORD-DOWNTOWN.COM



## GILBERT BORO

- 1 Raging Bull
- 2 Tres Gatos

## PETER BUSBY

- 3 Grazing Horse

## DENNIS CURTISS

- 4 Aberdare
- 5 Amboseli
- 6 Andes
- 7 Bandarawela
- 8 Deepavali
- 9 Elsa
- 10 Galle
- 11 Idaho
- 12 Lotus
- 13 Oberoi
- 14 Samburu

## DARRELL DAVIS

- 15 Change of Direction
- 16 Heron and the Sun

## JOE DEMARCO

- 17 Focus
- 18 Hombre
- 19 Morris
- 20 Out to Pasture
- 21 Pride
- 22 Shawn
- 23 Shorty II

## ED HADDAWAY

- 24 Early Morning Walk

## ANDREW MUNCE

- 25 The Missing Link

## MORRIS NORVIN

- 26 The Discarded
- 27 Unicorn

## THOMAS OSTENBERG

- 28 But, I Feel Fine

## DEL PETTIGREW

- 29 Crackle Mania
- 30 Two's Company

## MARTHA PETTIGREW

- 31 Northern Exposure

## FREDRICK PRESCOTT

- 32 American Buffalo

## VIRGINIA SPERRY

- 33 The Nest
- 34 Tundra

## KENT ULLBERG

- 35 First Born
- 36 Waiting for Sockeye

## BOAZ VAADIA

- 37 Asa with Dog
- 38 Daniyyel with Dog
- 39 Yo'ah with Dog

## KAREN WASSMER

- 40 Dragonfly

## JON WESTBERG AND JOHN IORIO

- 41 Eagle in a Tree

## WESLEY WOFFORD

- 42 The Realization



Location not shown on map

- 2 First Stamford Place
- 42 First Stamford Place



**JOE DEMARCO**

◀ Shorty II

Sponsored by: Reckson, a Division of SL Green Realty Corp.



◀ Pride

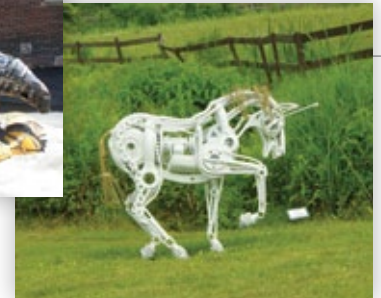
Sponsored by: A. Vitti Construction, Inc.



**MORRIS NORVIN**

The Discarded ▲

Sponsored by: Bildner Capital Corp.



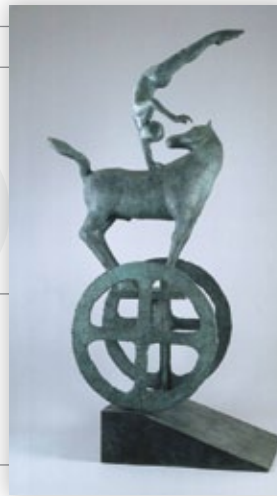
Unicorn ▲

Sponsored by: Betsy Levinson & Family

**ED HADDAWAY**

Early Morning Walk ▶

Sponsored by: Stamford Downtown Special Services District



**THOMAS OSTENBERG**

◀ But, I Feel Fine

Sponsored by: Snyder Group, Inc.

**ANDREW MUNCE**

▼ The Missing Link

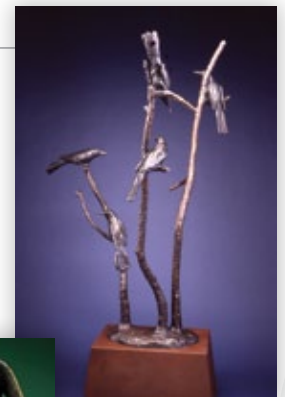
Sponsored by: Stamford Downtown Special Services District



**DEL PETTIGREW**

Grackle Mania ▶

Sponsored by: City of Stamford



Two's Company ▶

Sponsored by: City of Stamford





**MARTHA PETTIGREW**

◀ Northern Exposure

Sponsored by: GB Parking

**KENT ULLBERG**

Waiting for Sockeye ▶

Sponsored by:  
S.A.C. Capital Advisors, L.P.



◀ First Born

Sponsored by: Stamford Hospital



**FREDRICK PRESCOTT**

American Buffalo ▶

Sponsored by: AT&T



**VIRGINIA SPERRY**

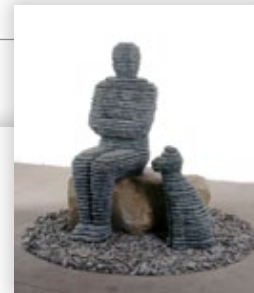
◀ The Nest

Sponsored by: Stamford Town Center



◀ Tundra

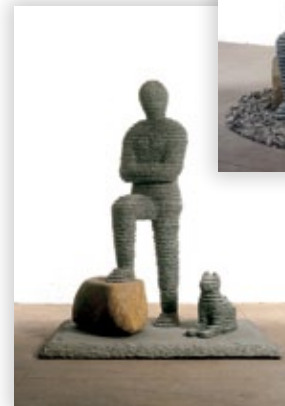
Sponsored by:  
Grade A ShopRite



**BOAZ VAADIA**

◀ Asa with Dog

Sponsored by: People's United Bank



▲ Daniyyel with Dog

Sponsored by:  
Seaboard Properties, Inc.



◀ Yo'ah  
with Dog

Sponsored by:  
RBS



## KAREN WASSMER

### ◀ Dragonfly

Sponsored by:  
United Realty of Connecticut, Inc.

## JON WESTBERG AND JOHN IORIO

### Eagle in a Tree ▶

Sponsored by:  
Stamford Downtown  
Special Services District



## WESLEY WOFFORD

### ◀ The Realization

Sponsored by:  
W & M Properties

## GOLD SPONSORS

**Seaboard Properties, Inc.**  
**Snyder Group, Inc.**  
**Stamford Town Center**  
**W & M Properties**

## SILVER SPONSORS

Emmett & Glander, Attorneys at Law  
People's United Bank  
RBS  
Reckson, a Division of SL Green Realty Corp.  
Silver Golub & Teitell LLP

## BRONZE SPONSORS

A. Vitti Construction, Inc.  
Betsy Levinson & Family  
Gibraltar Management Co., Inc.  
Grade A ShopRite  
Hoffman Investment Partners/  
Summer High, LLC  
National Realty & Development Corp.  
Purdue Pharma L.P.  
S.A.C. Capital Advisors, L.P.  
Stamford Hospital  
UBS  
United Realty of Connecticut, Inc.

## CONTRIBUTORS

GB Parking  
Urstadt Biddle Properties, Inc.

## CURATOR

Eileen Heckerling

## TECHNICAL DIRECTOR

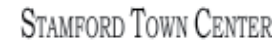
Andrew Munce

## CITY OF STAMFORD TRAFFIC MAINTENANCE DIVISION INSTALLATION TEAM

Ernest Orgera, Traffic & Road Maintenance Supervisor  
Douglas Hoyt, Operations Supervisor  
Santo DiDonato  
Markos Echeverria  
Chris Kocot  
Keith Rich  
Robert Sabia  
Ralph Socci  
Ed Whitehead

## BRONZE PARTNERS

AT&T  
Bildner Capital Corp.  
Robinson & Cole, LLP



Dannel P. Malloy,  
Mayor



Happyhaha.com



**Stamford Downtown Special Services District**  
Five Landmark Square, Suite 110  
Stamford, CT 06901  
[www.stamford-downtown.com](http://www.stamford-downtown.com)



Dannel P. Malloy,  
Mayor